



SMART Board® 6000 series

Our most popular interactive display with iQ embedded computing and collaboration features for walk up and use simplicity.

65" | 75"

Walk in and it turns on

A proximity sensor automatically powers up the SMART Board 6000 when you walk in the room saving time and energy costs.

Pick up a pen and start writing

The intelligent pen tray automatically selects the black or red pen tool, so you don't have to choose it from a menu before writing.

As easy as writing on paper

SMART invented DVIT® (Digital Vision Touch) technology to ensure a smooth writing experience that looks and feels natural.

1-YEAR

SMART Learning Suite
subscription included



Unparalleled Collaborative Experience

With 30 years of experience in education technology, SMART interactive displays are designed to support teaching approaches that affect learning outcomes.



Multiple students, tools and colors at the same time

Simultaneous Tool Differentiation frees multiple students to write, erase and move notes at the same time. **Pen ID™** recognition and **Object awareness™** detection automatically make pens write in different colors, fingers move and palms erase.



Write and save notes directly into applications

SMART Ink® software lets teachers write over videos and into **PDFs, Microsoft Office® files** and websites, then save notes in almost any file type. Automatically convert notes to text and access tools, such as spotlight, magnifier and screen shade.

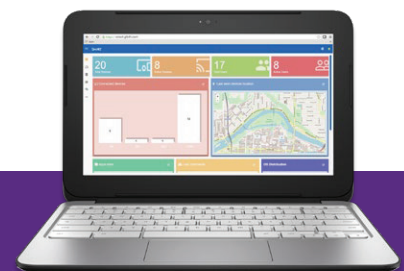
Built to use. Built to last.

Durable and commercial-grade, SMART Board displays have received many safety, regulatory and environmental certifications, giving you peace of mind that they adhere to government or other regulatory requirements.

- | | |
|---|--|
|  4K Ultra HD resolution |  ENERGY STAR® certification |
|  Accelerated Life Testing |  Conflict-free materials and sourcing |
|  LED rated for 50,000 hours |  Regulatory and environmental certifications* |
|  Fully heat-tempered, anti-glare glass |  3-year standard warranty** (1-year on pens) |
|  Silktouch™ frictionless surface | |

*See specification chart for detailed certifications.

**1- or 2-year extended options available. 5-year standard in UK.



SMART Remote Management lets you efficiently maintain, secure and support **all your devices** – including SMART Board displays with iQ.

Engage students. Empower teachers.

Together with **SMART Learning Suite** software and **iQ embedded computing** options, SMART Board displays give teachers endless ways to quickly and easily create and deliver dynamic lessons.

SMART Learning Suite transforms static content into interactive lessons including collaborative workspaces, game-based activities and formative assessments – all in one ultimate education suite.



Desktop experience

Teachers can connect their Windows or Mac® computer and deliver interactive SMART Notebook® lessons at the display. Time-saving activity and assessment templates are easy to customize for all grades and subjects.



Online experience

Teachers can add game-based and collaborative activities to SMART Notebook, PDF and PowerPoint files, and send lessons to student devices to complete individual handouts or work together in collaborative workspaces.

iQ embedded computing puts everything teachers need to seamlessly transition lessons in one place at the touch of a finger – without extra hardware or apps.



Android™ experience

iQ provides teachers one-touch access to SMART Notebook lessons and collaboration tools including a whiteboard, web browser, apps library and native, wireless screen sharing.



Windows® experience

Give teachers access to Microsoft Office files and applications on a full Windows 10 Pro computer right at the display by adding an Intel® Compute Card to iQ.



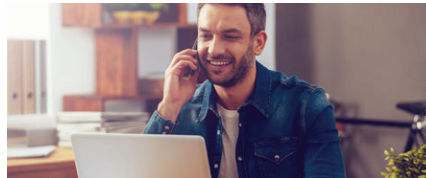
Get the most out of your SMART solution

Your purchase is just the beginning. Our implementation services, professional development and technical support resources help educators learn to use their SMART solutions, hone their technology skills and improve student learning outcomes.



Education Consulting

SMART has a team of former educators dedicated to supporting implementation, as well as publications and research demonstrating improved outcomes.



Professional Development

SMART provides complimentary professional development plans, and online courses and webinars that cover both functional and pedagogical topics.



Technical Support

So much more than downloads and guides, SMART support has tons of training resources to get you started and a thriving community of educators to tap into.

Platinum Partner:



Unit 6, Plot 22018, Kgomokasitwa Rd,
Gaborone West Industrial.

Tel: (+267) 3928 427

Fax: (+267) 3928 428

Email: info@empiresynergy.co.bw

Website: www.empiresynergy.co.bw



	6265	6365	6275	6375
SMART Learning Suite	1-year subscription	1-year subscription	1-year subscription	1-year subscription
iQ apps and features	SMART Notebook Player Customizable home screen Digital whiteboard Web browser Native screen sharing File and app libraries	SMART Notebook Player Customizable home screen Digital whiteboard Web browser Native screen sharing File and app libraries	SMART Notebook Player Customizable home screen Digital whiteboard Web browser Native screen sharing File and app libraries	SMART Notebook Player Customizable home screen Digital whiteboard Web browser Native screen sharing File and app libraries
Intel Compute Card with Windows 10 Pro	Upgrade option available	Included. Options available. See smarttech.com/iQ for details.	Upgrade option available	Included. Options available. See smarttech.com/iQ for details.
SMART Remote Management	Optional	Optional	Optional	Optional
DISPLAY				
Screen size (diagonal)	65"	65"	75"	75"
Resolution	4K Ultra HD (3840 × 2160)	4K Ultra HD (3840 × 2160)	4K Ultra HD (3840 × 2160)	4K Ultra HD (3840 × 2160)
Refresh rate	60 Hz	60 Hz	60 Hz	60 Hz
Aspect ratio	16:9	16:9	16:9	16:9
Back lighting	e-LED	e-LED	e-LED	e-LED
LED lifespan	Commercial-grade – 50,000 hours	Commercial-grade – 50,000 hours	Commercial-grade – 50,000 hours	Commercial-grade – 50,000 hours
LCD quality	Grade A	Grade A	Grade A	Grade A
Contrast ratio	4000:1	4000:1	4000:1	4000:1
Brightness	360 cd/m ²	360 cd/m ²	420 cd/m ²	420 cd/m ²
Response time	8 ms	8 ms	8 ms	8 ms
Glass	Fully heat-tempered, anti-glare	Fully heat-tempered, anti-glare	Fully heat-tempered, anti-glare	Fully heat-tempered, anti-glare
TOUCH AND DIGITAL INK				
Touch technology	DVIT	DVIT	DVIT	DVIT
Simultaneous Tool Differentiation	✓	✓	✓	✓
Object awareness	✓	✓	✓	✓
Pen ID	✓	✓	✓	✓
SMART Ink	✓	✓	✓	✓
Silktouch	✓	✓	✓	✓
Simultaneous touch points	8 (Windows and Mac)	8 (Windows and Mac)	8 (Windows and Mac)	8 (Windows and Mac)
Tools included	2 pens (black, red)	2 pens (black, red)	2 pens (black, red)	2 pens (black, red)
IQ APPLIANCE				
Model	AM40	AM50	AM40	AM50
Operating system	Android 7.1 Nougat	Android 7.1 Nougat	Android 7.1 Nougat	Android 7.1 Nougat
Processor	RK3399, Dual-core A72 + Quad-core A53, 64 bits, 2GHz	RK3399, Dual-core A72 + Quad-core A53, 64 bits, 2GHz	RK3399, Dual-core A72 + Quad-core A53, 64 bits, 2GHz	RK3399, Dual-core A72 + Quad-core A53, 64 bits, 2GHz
Memory	4 GB	4 GB	4 GB	4 GB
Storage	32 GB	32 GB	32 GB	32 GB
Wireless technology	Bluetooth 4.1 802.11A/B/G/N/Ac	Bluetooth 4.1 802.11A/B/G/N/Ac	Bluetooth 4.1 802.11A/B/G/N/Ac	Bluetooth 4.1 802.11A/B/G/N/Ac
Connectors	HDMI 1.4 out USB 3.0 Type-A (×2) RJ45 Gigabit Ethernet	HDMI 1.4 out USB 3.0 Type-A (×2) RJ45 Gigabit Ethernet	HDMI 1.4 out USB 3.0 Type-A (×2) RJ45 Gigabit Ethernet	HDMI 1.4 out USB 3.0 Type-A (×2) RJ45 Gigabit Ethernet
CONNECTIVITY				
Wired	RJ45	RJ45	RJ45	RJ45
Wi-Fi	IEEE 802.11A/B/G/N/Ac with 2 × 2 MIMO (both 2.4 and 5 GHz bands)	IEEE 802.11A/B/G/N/Ac with 2 × 2 MIMO (both 2.4 and 5 GHz bands)	IEEE 802.11A/B/G/N/Ac with 2 × 2 MIMO (both 2.4 and 5 GHz bands)	IEEE 802.11A/B/G/N/Ac with 2 × 2 MIMO (both 2.4 and 5 GHz bands)
Bluetooth	4.0 dual mode (backwards compatible with Bluetooth 2.1 + EDR)	4.0 dual mode (backwards compatible with Bluetooth 2.1 + EDR)	4.0 dual mode (backwards compatible with Bluetooth 2.1 + EDR)	4.0 dual mode (backwards compatible with Bluetooth 2.1 + EDR)
INPUTS/OUTPUTS				
Front control panel	Standby, input select, mute/freeze frame, volume, onscreen display menu navigation	Standby, input select, mute/freeze frame, volume, onscreen display menu navigation	Standby, input select, mute/freeze frame, volume, onscreen display menu navigation	Standby, input select, mute/freeze frame, volume, onscreen display menu navigation
Video	HDMI 1.4 (×2), Display Port	HDMI 1.4 (×2), Display Port	HDMI 1.4 (×2), Display Port	HDMI 1.4 (×2), Display Port
Audio	Stereo 3.5 mm out	Stereo 3.5 mm out	Stereo 3.5 mm out	Stereo 3.5 mm out
USB	Type-A, Type-B (touch) (×3)	Type-A, Type-B (touch) (×3)	Type-A, Type-B (touch) (×3)	Type-A, Type-B (touch) (×3)
Other	OPS slot, RS-232 in	OPS slot, RS-232 in	OPS slot, RS-232 in	OPS slot, RS-232 in
Speakers	10 W integrated speakers (×2)	10 W integrated speakers (×2)	10 W integrated speakers (×2)	10 W integrated speakers (×2)
POWER				
Power consumption (display only)	1.7 W standby, 83 W normal	1.7 W standby, 83 W normal	1.7 W standby, 128 W normal	1.7 W standby, 128 W normal
ENERGY STAR certified	✓	✓	✓	✓
Presence detection	One sensor	One sensor	One sensor	One sensor
INSTALLATION				
Dimensions	59 3/8" × 36 3/8" × 5 1/8" (150.8 cm × 98.3 cm × 12.9 cm)	59 3/8" × 36 3/8" × 5 1/8" (150.8 cm × 98.3 cm × 12.9 cm)	68 1/8" × 43 5/8" × 5 1/8" (173.1 cm × 110.7 cm × 12.9 cm)	68 1/8" × 43 5/8" × 5 1/8" (173.1 cm × 110.7 cm × 12.9 cm)
Weight	153 lb. (69.3 kg)	153 lb. (69.3 kg)	199 lb. (90 kg)	199 lb. (90 kg)
VESA mounting points	300 mm × 400 mm	300 mm × 400 mm	600 mm × 400 mm	600 mm × 400 mm
CERTIFICATION AND COMPLIANCE				
Regulatory certifications	UL (U.S./Canada), FCC, IC, CE, RCM, CIRC, TRA	UL (U.S./Canada), FCC, IC, CE, RCM, CIRC, TRA	UL (U.S./Canada), FCC, IC, EMC, LV, VCCI, PSE	UL (U.S./Canada), FCC, IC, EMC, LV, VCCI, PSE
Environmental compliance	EU: REACH, RoHS, WEEE and Packaging; U.S.: Packaging and Conflict Minerals	EU: REACH, RoHS, WEEE and Packaging; U.S.: Packaging and Conflict Minerals	EU: REACH, RoHS, WEEE and Packaging; U.S.: Packaging and Conflict Minerals	EU: REACH, RoHS, WEEE and Packaging; U.S.: Packaging and Conflict Minerals
Full HDMI and USB compliance	✓	✓	✓	✓
Accelerated life testing	✓	✓	✓	✓
Conflict-free minerals and sourcing	✓	✓	✓	✓